

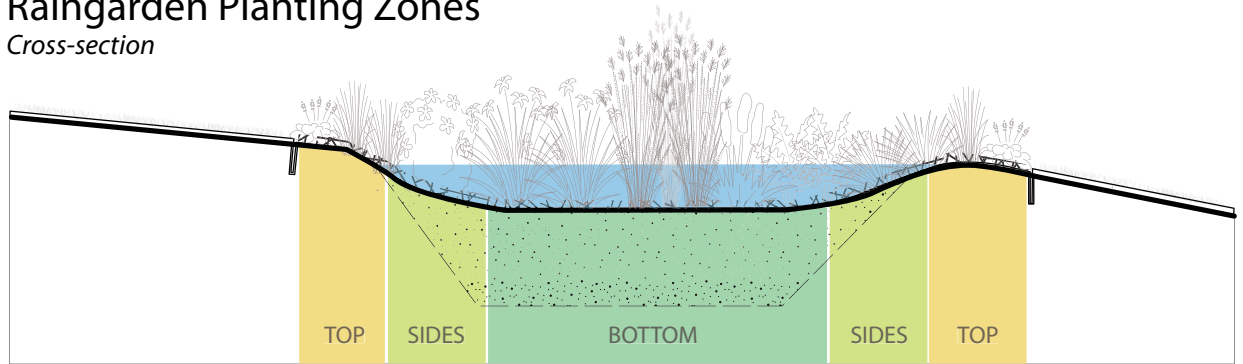
Rain Garden Template

USE OF TEMPLATES

The following templates are meant to aid in plant selection for a rain garden according to light and water needs. Each template has plants (and selected substitutes) that are chosen for Full Sun, Part Sun, and Shade locations. The diagram below shows the typical zones to consider for plant selection and the list is sorted according to these zones.

Raingarden Planting Zones

Cross-section



| Common Native Plants for Rain Gardens | Common Name | Genus species | Planting Zone |
|---------------------------------------|---------------------------------|------------------------------------|---------------|
| | Alum Root | <i>Heuchera sanguinea</i> | Top |
| | Butterfly Milkweed | <i>Asclepias tuberosa</i> | Top |
| | Prairie Dropseed | <i>Sporobolus heterolepis</i> | Top |
| | Prairie Smoke | <i>Geum triflorum</i> | Top |
| | Purple Prairie Clover | <i>Dalea purpurea</i> | Top |
| | Heart Leaved Alexanders | <i>Zizia aptera</i> | Sides, Top |
| | Little Bluestem | <i>Schizachyrium scoparium</i> | Sides, Top |
| | Stiff Goldenrod | <i>Solidago rigida</i> | Sides, Top |
| | Autumn Sneezeweed | <i>Helenium autumnale</i> | Bottom, Sides |
| | Bebb's Sedge | <i>Carex bebbii</i> | Bottom, Sides |
| | Great Lobelia | <i>Lobelia siphilitica</i> | Bottom, Sides |
| | Grey-headed Coneflower | <i>Ratibida pinnata</i> | Bottom, Sides |
| | Indian Grass | <i>Sorghastrum nutans</i> | Bottom, Sides |
| | Joe Pye Weed | <i>Eupatorium maculatum</i> | Bottom, Sides |
| | Lady Fern | <i>Athyrium filix-femina</i> | Bottom, Sides |
| | New England Aster | <i>Symphotrichum novae-angliae</i> | Bottom, Sides |
| Northern Blue Flag Iris | <i>Iris versicolor</i> | Bottom, Sides | |
| Prairie Blazing Star | <i>Liatris pycnostachya</i> | Bottom, Sides | |
| Purple Coneflower | <i>Echinacea purpurea</i> | Bottom, Sides | |
| Rattlesnake Master | <i>Eryngium yuccifolium</i> | Bottom, Sides | |
| Sensitive Fern | <i>Onoclea sensibilis</i> | Bottom, Sides | |
| Soft Rush | <i>Juncus effusus</i> | Bottom, Sides | |
| Swamp Milkweed | <i>Asclepias incarnata</i> | Bottom, Sides | |
| White Turtlehead | <i>Chelone glabra</i> | Bottom, Sides | |
| Wild Bergamot | <i>Monarda fistulosa</i> | Bottom, Sides | |
| Culver's Root | <i>Veronicastrum virginicum</i> | Bottom | |

TOP:

Reserved for dry-loving species that do not tolerate standing water. Sedums, herbs, and shorter prairie grasses work well. Heights should be shorter.

SIDES:

Versatile species from mesic upland and wet meadows work well here. Coneflowers, medium height grasses, and Asters are common.

BOTTOM:

Select taller species that can tolerate both 6-12" of standing water for up to 48 hours as well as tolerate periods of prolonged drought. Wet meadow natives like Joe Pye Weed, Sneezeweed, and Switchgrass are good fits.

Rain Garden Template

FULL SUN PALETTE



8+ hours
of Sun

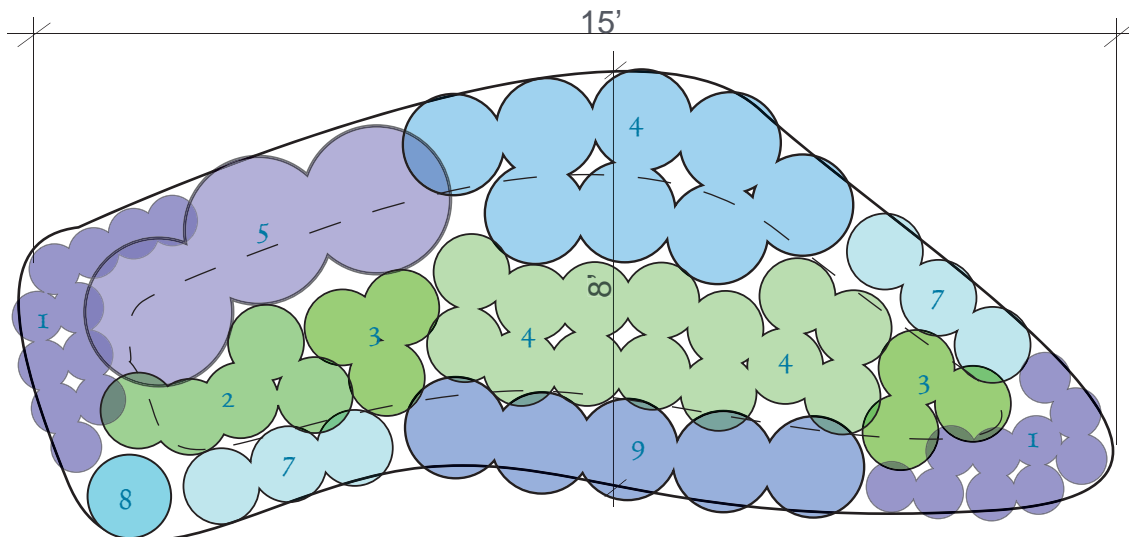
Notes for Construction:

*Gardens are assumed to be a 6" ponding depth (perform infiltration test for accurate depth).

*Plants are generally spaced 18", but grasses and shrubs will need more spacing and shorter species on the edges will often be 12"-18".

*Plants chosen are recommendations. Always check plant soil, water, and light requirements before purchasing.

*These plans are for 100 sq ft garden. See Materials and Installation Costs pages for multipliers to fit your garden needs.



1) **Prairie Smoke** (*Geum triflorum*)

Substitutes: June Grass, carpet-forming sedums, or small rock garden types of species

2) **Bebb's Sedge** (*Carex bebbii*)

Substitutes: Sprengell's Sedge, Fox Sedge, Tussock Sedge, Meadow Blazing Star (*Liatris ligulistylis*)

3) **Blue Flag Iris** (*Iris versicolor*)

Substitutes: Soft Rush, Green Bulrush, DO NOT USE Yellow Iris (*Iris pseudacorus*)

4) **Purple Coneflower** (*Echinacea purpurea*)

Substitutes: Pale Purple Coneflower, *Echinacea* cultivars (eg, 'Magnus', 'White Swan')

5) **'Autumn Magic' Chokeberry** (*shrub) *Aronia melanocarpa* 'Autumn Magic'

Substitutes: False Blue Indigo, 'Little Joe' Joe Pye Weed, small Viburnum shrubs

6) **'Shenandoah' Switchgrass** (*Panicum virgatum* 'Shenandoah')

Substitutes: Karl Foerster Grass, Indian Grass (*Sorghastrum nutans*)

7) **'Autumn Joy' Sedum** (*Sedum* 'Autumn Joy')

Substitutes: 'Matrona' Sedum, Salvias ('May Night' or 'Caradonna'), Daylily ('Happy Returns')

8) **Butterfly Milkweed** (*Asclepias tuberosa*)

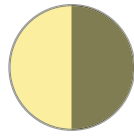
Substitutes: Little Bluestem, 'Moonbeam' Coreopsis, 'Goldsturm' Black Eyed Susan

9) **Prairie Dropseed** (*Sporobolus heterolepis*)

Substitutes: Catmint ('Walkers Low'), Silky Aster, New England Aster ('Purple Dome')

Rain Garden Template

PART SUN PALETTE



5-8 hours
of Sun

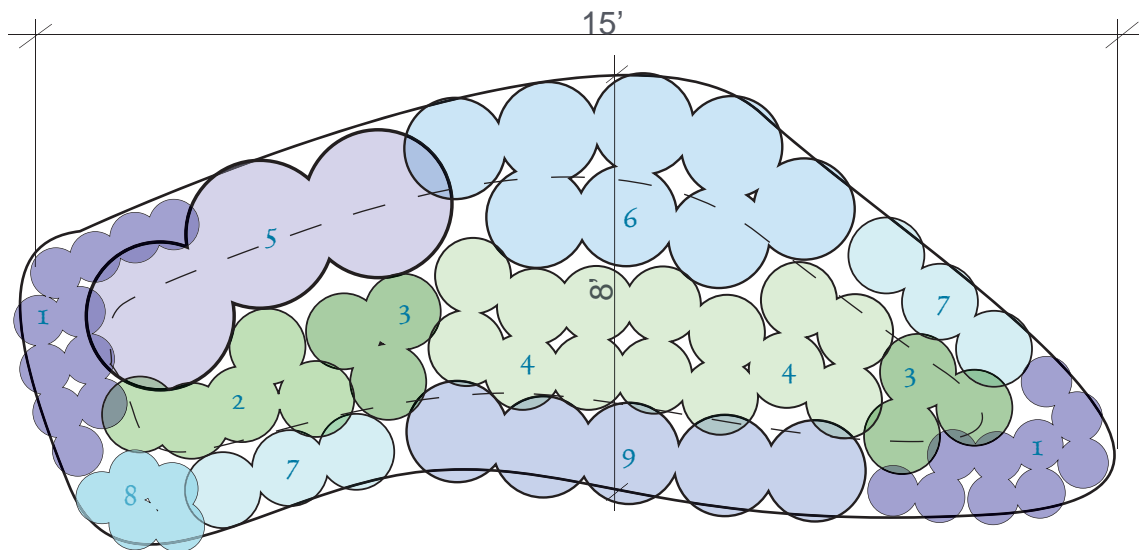
Notes for Construction:

*Gardens are assumed to be a 6" ponding depth (perform infiltration test for accurate depth).

*Plants are generally spaced 18", but grasses and shrubs will need more spacing and shorter species on the edges will often be 12"-18".

*Plants chosen are recommendations. Always check plant soil, water, and light requirements before purchasing.

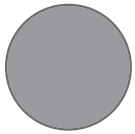
*These plans are for 100 sq ft garden. See Materials and Installation Costs pages for multipliers to fit your garden needs.



- 1) **Bugleweed** (*Ajuga reptans*)
Substitutes: Gaillardia (Blanket Flower), Woods Blue Aster, Wild Geranium
- 2) **Bebb's Sedge** (*Carex bebbii*)
Substitutes: Sprengell's Sedge, Fox Sedge, Meadow Blazing Star
- 3) **Blue Flag Iris** (*Iris versicolor*)
Substitutes: Soft Rush, Green Bulrush, DO NOT USE Yellow Iris (*Iris pseudacorus*)
- 4) **'Hot Lips' Turtlehead** (*Chelone obliqua 'Hot Lips'*)
Substitutes: Turtle Head, Culvers Root, Blue Lobelia, Cardinal Flower
- 5) **'Autumn Magic' Chokeberry** (*shrub) (*Aronia melanocarpa 'Autumn Magic'*)
Substitutes (non-shrub): False Blue Indigo, 'Little Joe' Joe Pye Weed, small Viburnum shrubs
- 6) **'Shenandoah' Switchgrass** (*Panicum virgatum 'Shenandoah'*)
Substitutes: Karl Foerster Grass, Deschampsia (not tall)
- 7) **'Palace Purple' Coral Bells** (*Heuchera spp.*)
Substitutes: Any cultivar of Coral Bells or native Alum Root (*Heuchera sanguinea*)
- 8) **Heartleaf Bergenia** (*Bergenia cordifolia*)
Substitutes: Bleeding hearts, Lady's Mantle
- 9) **'Purple Dome' New England Aster** (*Aster novae-angliae 'Purple Dome'*)
Substitutes: Daylily (any short cultivar), Cranesbill (*Geranium sanguineum*, or any cultivar)

Rain Garden Template

FULL SHADE PALETTE



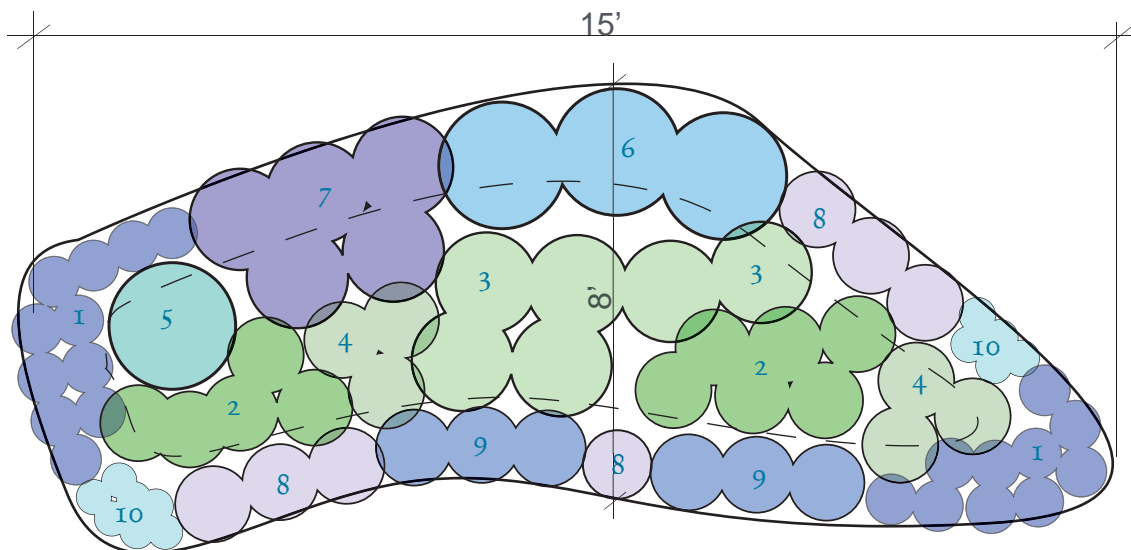
<5 hours
of Sun

Notes for Construction:

*Gardens are assumed to be a 6" ponding depth (perform infiltration test for accurate depth).

*Plants are generally spaced 18", but grasses and shrubs will need more spacing and shorter species on the edges will often be 12"-18".

*These plans are for 100 sq ft garden. See Materials and Installation Costs pages for multipliers to fit your garden needs.



1) **Pennsylvania Sedge** (*Carex pennsylvanica*)

Substitutes: Blue Sedge, Dwarf Goatsbeard, Carpet Bugle, Tiarella, Wild Ginger

2) **Bebb's Sedge** (*Carex bebbii*)

Substitutes: Sprengell's Sedge, Fox Sedge

3) **Sensitive Fern** (*Onoclea sensibilis*)

Substitutes: Lady Fern, Ostrich Fern

4) **'Hot Lips' Turtlehead** (*Chelone obliqua 'Hot Lips'*)

Substitutes: Blue Lobelia, Cardinal Flower

5) **Ligularia 'Desdemona'** (*Ligularia dentata 'Desdemona'*)

Substitutes: 'Little Rocket' Ligularia, large blue Hostas (careful...deer candy)

6) **Bugbane** (*Cimicifuga racemosa*)

Substitutes: 'Hillside Black Beauty' Bugbane, 'Rocket' Ligularia, Goatsbeard (full size, not dwarf)

7) **Bleeding Hearts** (*Dicentra spectabilis*)

Substitutes: Bleeding Hearts (any larger cultivar), Solomon's Seal (native or variegated cultivar)

8) **'Palace Purple' Coral Bells** (*Heuchera spp.*)

Substitutes: Any cultivar of Coral Bells, Heartleaf Bergenia

9) **Jacob's Ladder** (*Polemonium reptans*)

Substitutes: Astilbe (any cultivar), Alpine/Dwarf Columbine (any cultivar)

10) **Maidenhair Fern** (*Adiantum pedatum*)

Substitutes: Japanese Painted Fern, 'Ghost' Fern, Brunnera (select zone-hardy cultivars)

Common Rain Garden Plants



Native Grasses

Shown: Indian Grass
Sorghastrum nutans



Native Grasses

Shown: Prairie Dropseed
Sporobolus heterolepis



Native Grasses

Shown: Little Bluestem
Schizachyrium scoparium



Cultivated Grasses

Shown: Karl Foerster
Feather Reed Grass



Iris

Shown: Blue Flag Iris
Iris versicolor



Rushes

Shown: Soft Bulrush
Juncus effusus



Sedges

Shown: Fox Sedge
Carex vulpinoidea



Sedges

Shown: Sprengell's Sedge
Carex sprengellii



Shrubs

Shown: Red Twig Dogwood
Cornus sericea



Shrubs

Shown: Black Chokeberry
Aronia melanocarpa



Shrubs

Shown: Bush Honeysuckle
Diervilla lonicera



Ferns

Shown: Sensitive Fern
Onoclea sensibilis

Common Rain Garden Plants



Coneflowers

Shown: Purple Coneflower
& Goldsturm Coneflower



Eryngium

Shown: Rattlesnake Master
Eryngium yuccifolium



Asters

Shown: 'Purple Dome'
New England Aster



Lobelias

Shown: Blue Lobelia
Lobelia siphilitica



Blazingstars

Shown: Meadow
Blazingstar
Liatris ligulistylus



Monarda

Shown: Bee Balm
Monarda fistulosa



Eupatoriums

Shown: Joe Pye Weed
Eupatorium purpureum



Turtleheads

Shown: 'Hot Lips' Turtlehead
Chelone obliqua



Sedums

Shown: 'Autumn Joy'
Sedum



Groundcovers

Shown: Carpet Bugle
Ajuga reptans



Groundcovers

Shown: Wild geranium
Geranium maculatum



Coral Bells

Shown: 'Palace Purple'
Coral Bells