

Mirror Pond Project

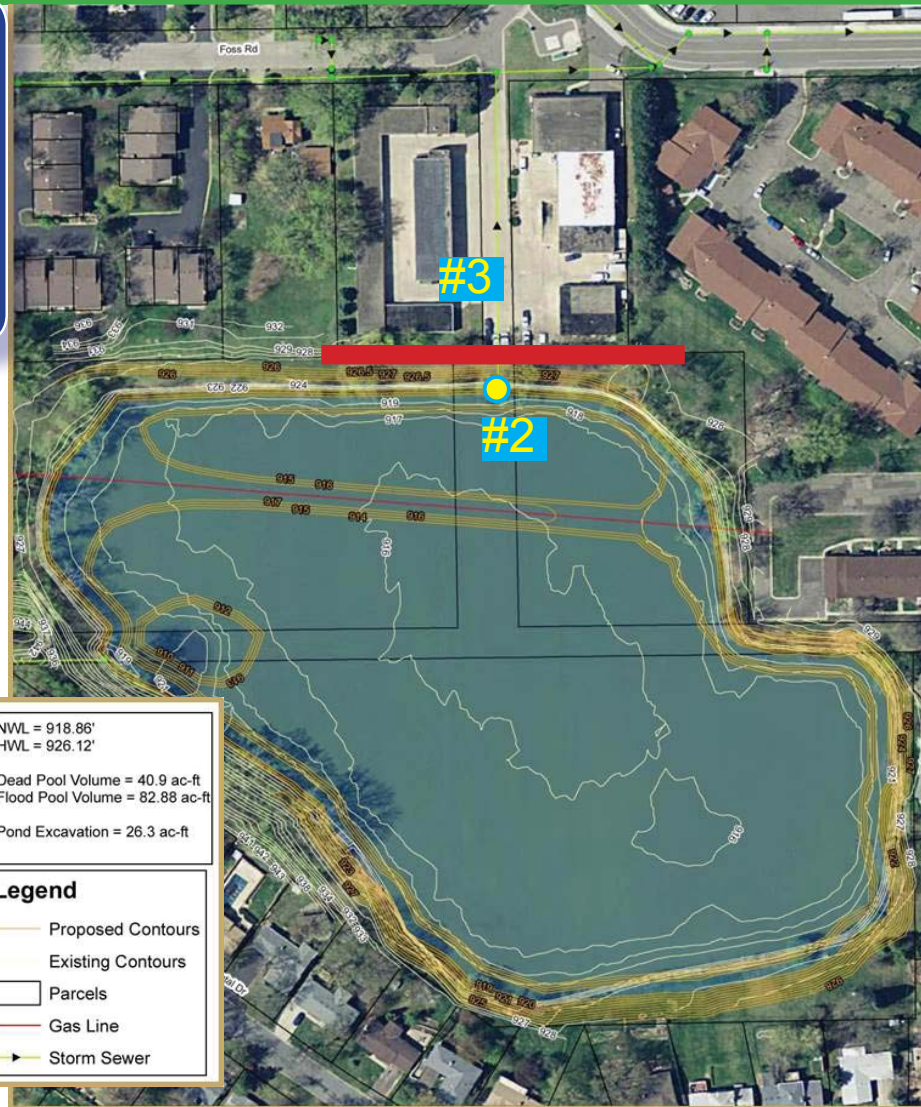
Overview

Concept Plan

- 1) Excavate Pond
- 2) Replace Outlet Structure
- 3) Construction Flood Control Berm
- 4) Stabilize Shoreline

Project Benefits

- Reduce phosphorus loadings and algae blooms in Mirror Pond and downstream
 - ◆ Annual Total Phosphorus removal 50 pounds minimum
- Increase Flood Storage from 46 to 83 acre-feet
 - ◆ No overtopping in the 100 yr event
 - ◆ Create designated emergency overflow
- Improve Public Safety
 - ◆ 10:1 bench around perimeter
- Improve aquatic and near-shore wildlife habitat
 - ◆ Buffer strip around pond
 - ◆ Establish native vegetation
 - ◆ Establish pollinator plants
 - ◆ Improve water quality



Mirror Pond Schedule

No.	Task	2015				2016							2017	2018	
		Sep	Oct	Nov	Dec	Jan	Feb	Mar	Apr	May	Jun-Aug	Sep	Oct -	Mar	Sep
1	Neighborhood Meetings	●					●								
2	Environmental Assessment Worksheet (EAW) Information Compiling	■	■												
3	EAW Review and Comment Process			■	■	■	■								
4	Receive Permits						■	■	■	■	■	■			
5	Prepare Preliminary Plans and Specs	■	■	■	■										
6	Submit Preliminary Plans to City and Watershed Review		●												
7	Prepare Final Plans and Specs						■	■							
8	Remove Necessary Vegetation and Trees						■	■							
9	Advertise Project for Bid								●						
10	Open Bids Received									●					
11	Award Contract										●				
12	Construction												■	■	Mar
13	Restoration												■	■	Mar



Project funding provided by:

